

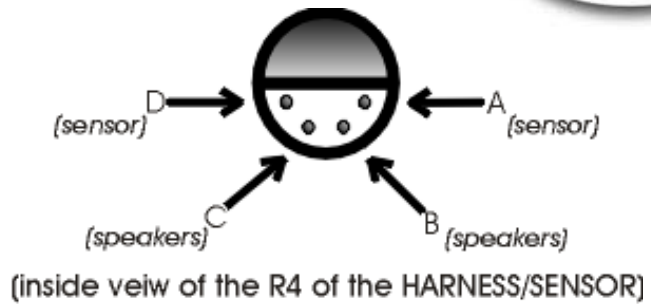
# Changing PINS on Harnesses and Sensors

(for the old model harness)

All spare parts are available from [www.nk.com.au](http://www.nk.com.au)

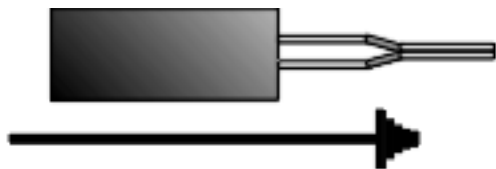


- Crimping Tool (pliers acceptable)
- Needle Nose Pliers
- Nyogel lubricant
- Small flat head screw driver (2 mm wide)
- Wire stripper



Slots 'A' and 'D' are for the sensor  
Slots 'B' and 'C' are for the speakers

1. Locate the 4-pin rubber receptacle (R4) which mates with the 5-hole plug on the CB/CV front panel. The receptacle is normally in the shell and connects with the wiring harness to the CB/CV.
2. Identify the two pins 'A' and 'D' (see figure above) attached to the stroke sensor and PUSH then out in the direction shown (see figure) using the needle nose pliers.
3. Once the pins have been pushed as far as they will go, pull on the sensor lead until the pins come free from the plug.
4. Cut off the old pins and strip the wire 1/4". The stripped wire must be clean.
5. Crimp the pins onto the wire. DO NOT SOLDER (will be brittle & break)
6. Use the pliers to position the new seat sensor pins into holes 'A' and 'D'. It does NOT matter which pin is inserted into which hole.
7. Use a VERY small slotted (flat-headed) screw driver to push the pins into the R4. The new pins should be even with the existing audio pins ('B' and 'C'). DO NOT pull the pins into the plug as this will damage the pins. Use the small screwdriver and carefully poke the pins home. There is a noticeable detent when the pins are fully seated.
8. Use the same procedure if you wish to replace the harness audio pins ('B' and 'C').



PUSH and PULL this direction to remove pins



PUSH this direction ONLY to insert new



#1244 Pin (gold)



#1245 Socket (gold)



#0241 Silicone Grease for rubber plugs



#0242 Nyogel Syringe Kit for electrical contacts  
(strongly recommended for salt water!)